

# **SkillsUSA**

## **2010 Contest Projects**

### **Carpentry**

Click the "Print this Section" button above to automatically print the specifications for this contest. Make sure your printer is turned on before pressing the button.

# MATERIALS LIST:

## WOOD FRAMING MATERIALS

<u>QTY</u>	<u>DESCRIPTION</u>
25	2" x 4" x 8' FRAMING
1	2" x 6" x 6' RIDGE BOARD
7	2" x 4" x 8' RAFTERS
3	4'-0" x 4'-0" x 3/8" SIDING (GROOVED 4" O.C. UNTREATED WD. SIDING)
1	3 1/4" x 2'-0" x 1/2" PLYWOOD
2	1" x 6" x 10' P.T. FASCIA
2	1" x 3 7/8" x 10' WINDOW JAMB
1	1" x 4" x 10' P.T. WINDOW TRIM
1	2" x 12" x 4' STAIR STRINGER
1	2" x 4" x 3' P.T. WINDOW TRIM (15-DEG. BEVEL)
1	1" x 2 3/4" x 3' P.T. WINDOW SILL (15-DEG. BEVEL)
1	1" x 6" x 3'-8" P.T. FASCIA (27-DEG. BEVEL)
1	10' GALVANIZED Z FLASHING

## STEEL FRAMED WALL

<u>QTY</u>	<u>DESCRIPTION</u>
4	6'-1 3/16" WALL STUDS & KING STUDS
2	5'-5 13/16" JACK STUDS
2	1'-7 3/4" LOWER CRIPPLE STUDS
1	7 5/8" UPPER CRIPPLE STUD
2	1'-8" HEAD AND SILL TRACK
2	3'-10 3/4" TOP AND BOTTOM TRACK
1	1'-11 1/4" BOTTOM OF HEADER TRACK
2	1'-9 1/4" HEADER MEMBERS
2	6 1/2" HEADER END SUPPORT

# PROJECT NOTES:

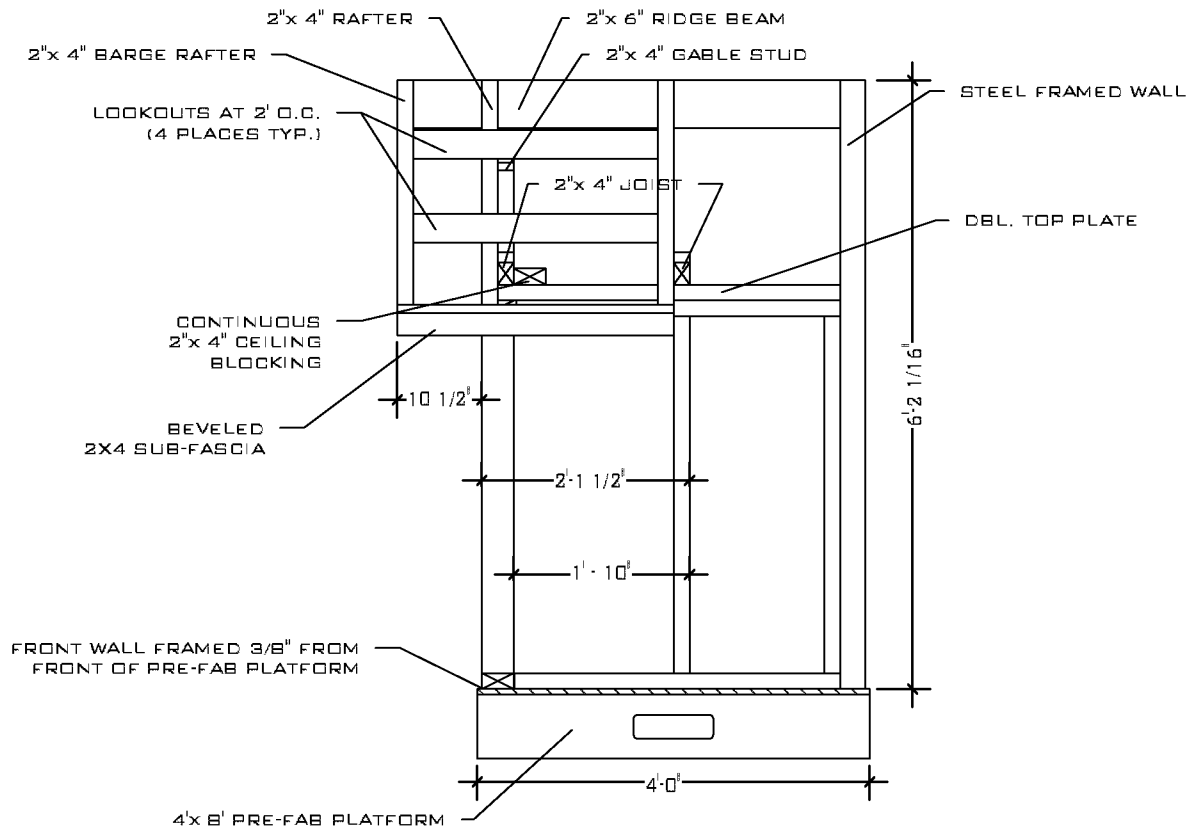
### PLATES:

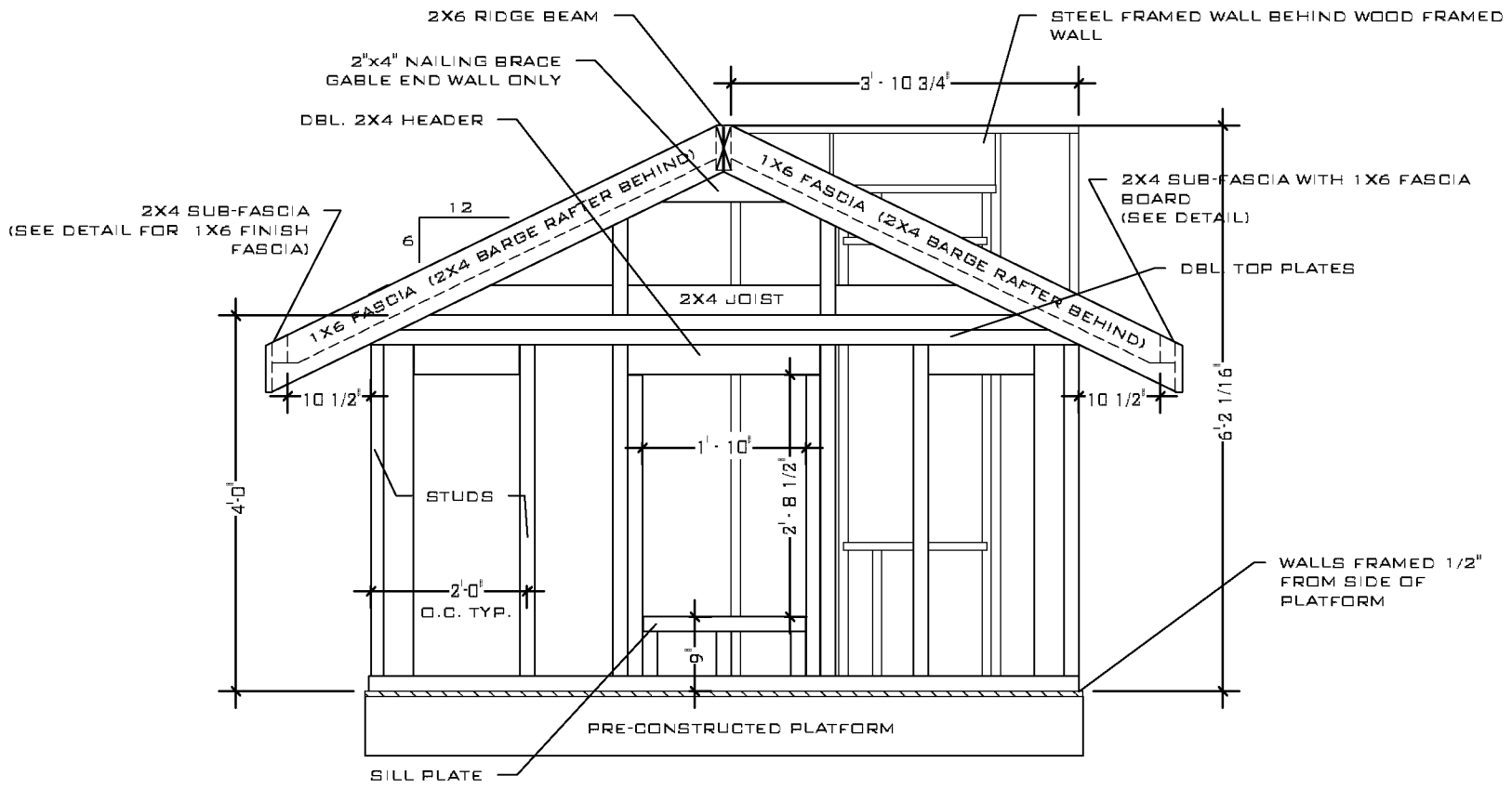
2 1/2" #8 PILOT POINT SCREWS TO BE USED ON WOOD & STEEL PLATES, AND WOOD-TO-STEEL CONNECTIONS

### HEADER:

USE 1/2" PLYWOOD SPAGER IN WINDOW HEADER

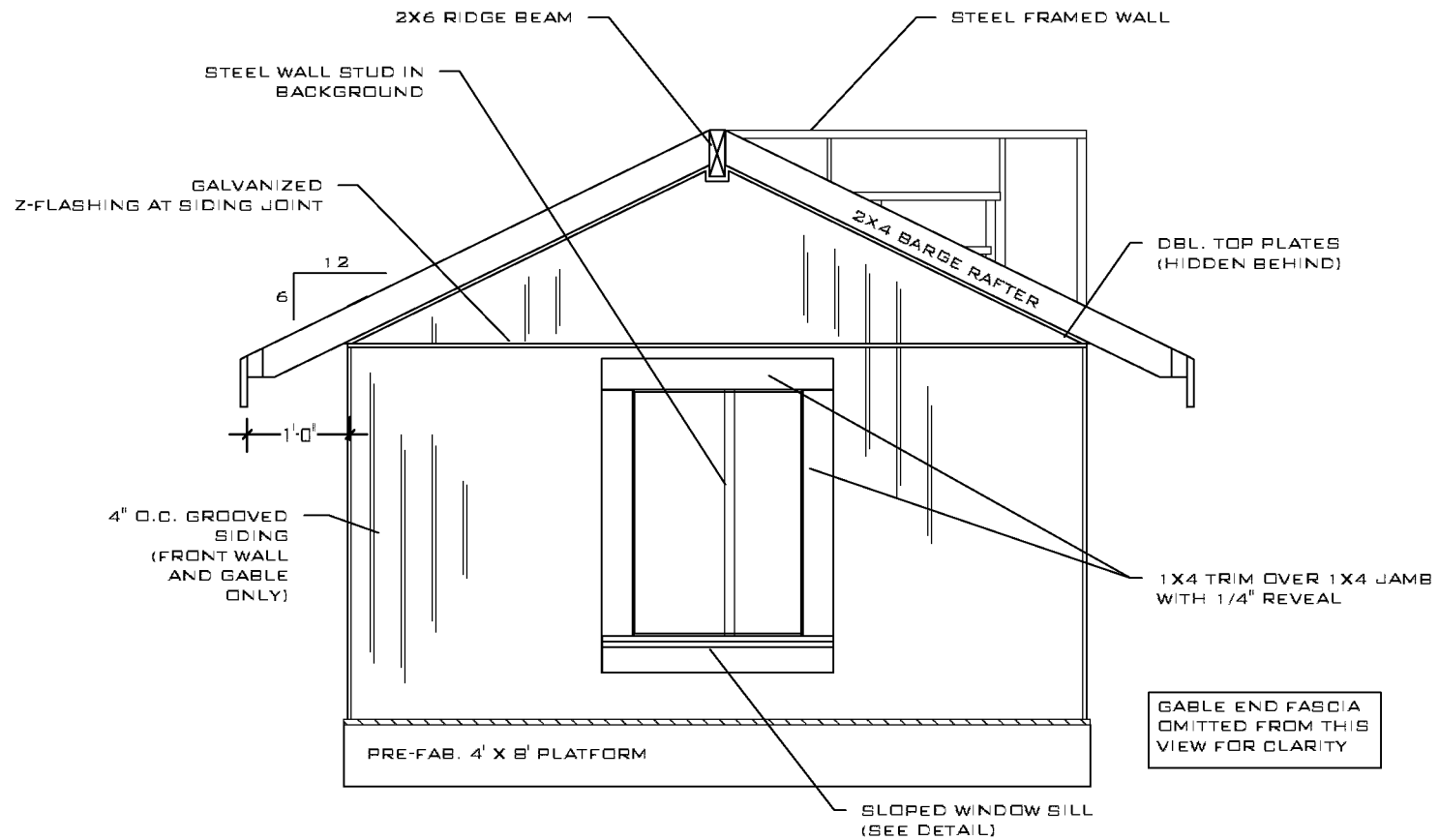
BOTTOM PLATES TO BE SCREWED ON TO BASE OF PLATFORM





FRONT ELEVATION WITH STEEL WALL

SCALE: 1/2" = 1'-0"



**4" O/C GROOVED SIDING FRONT ELEVATION**

**SCALE: 1/2" = 1'-0"**

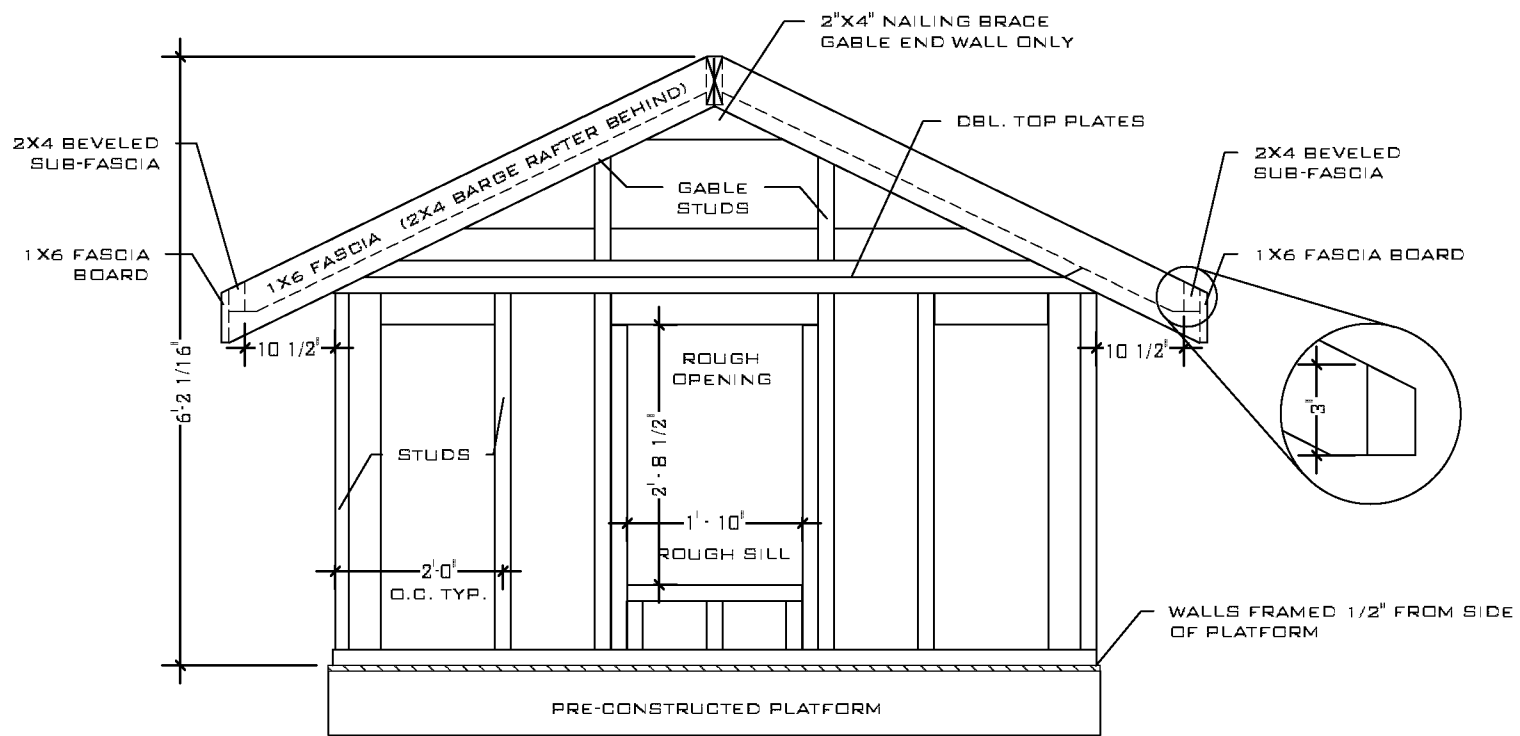
DATE

SCALE

DRAW

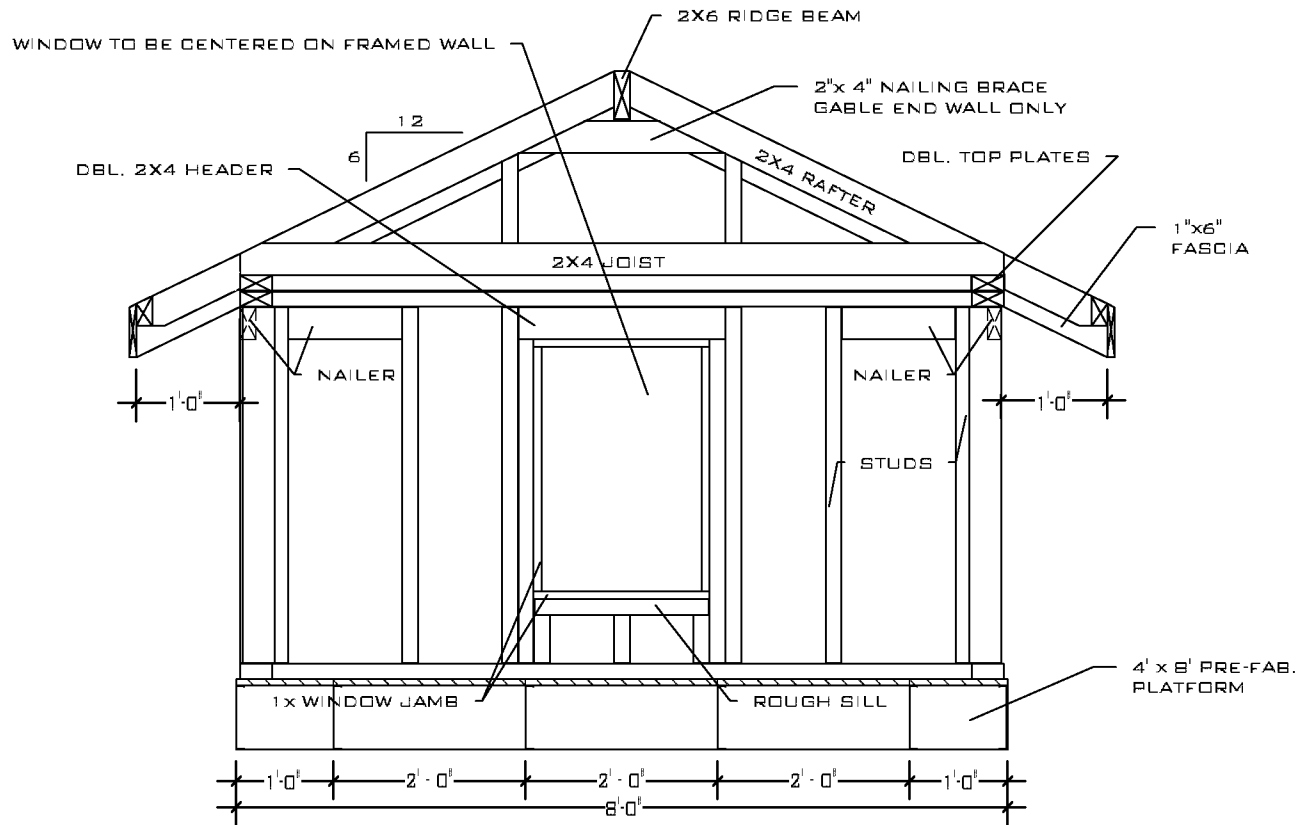
SHEET

OF



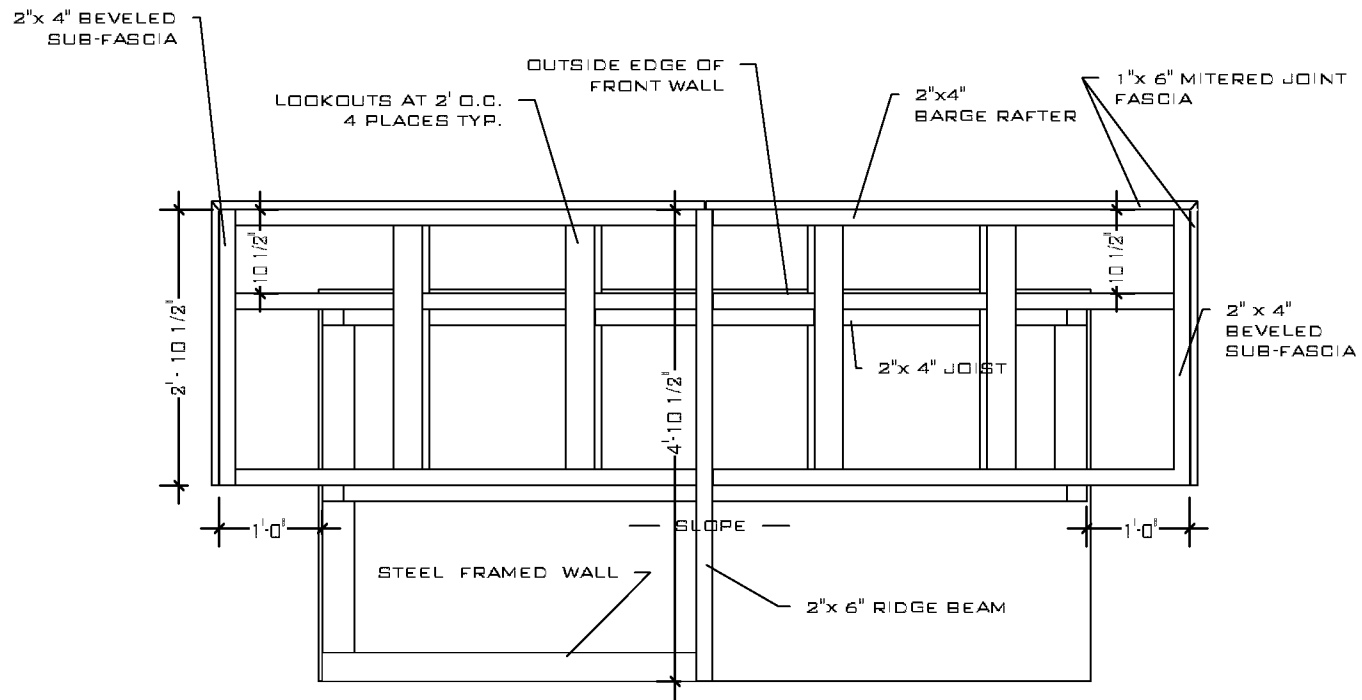
**FRONT ELEVATION W/O STEEL FRAMING**

**SCALE: 1/2" = 1'-0"**



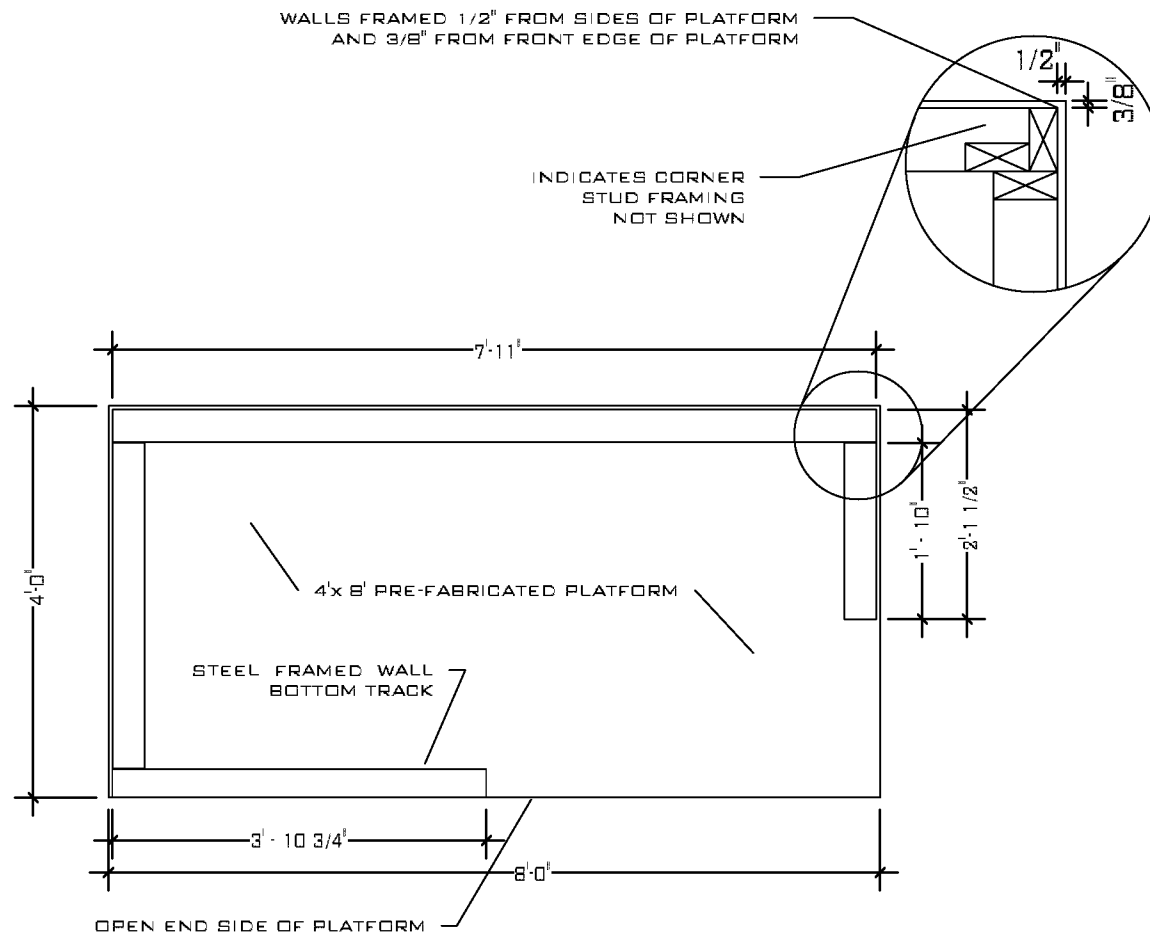
**REAR ELEVATION W/O STEEL FRAMING**

**SCALE: 1/2" = 1'-0"**



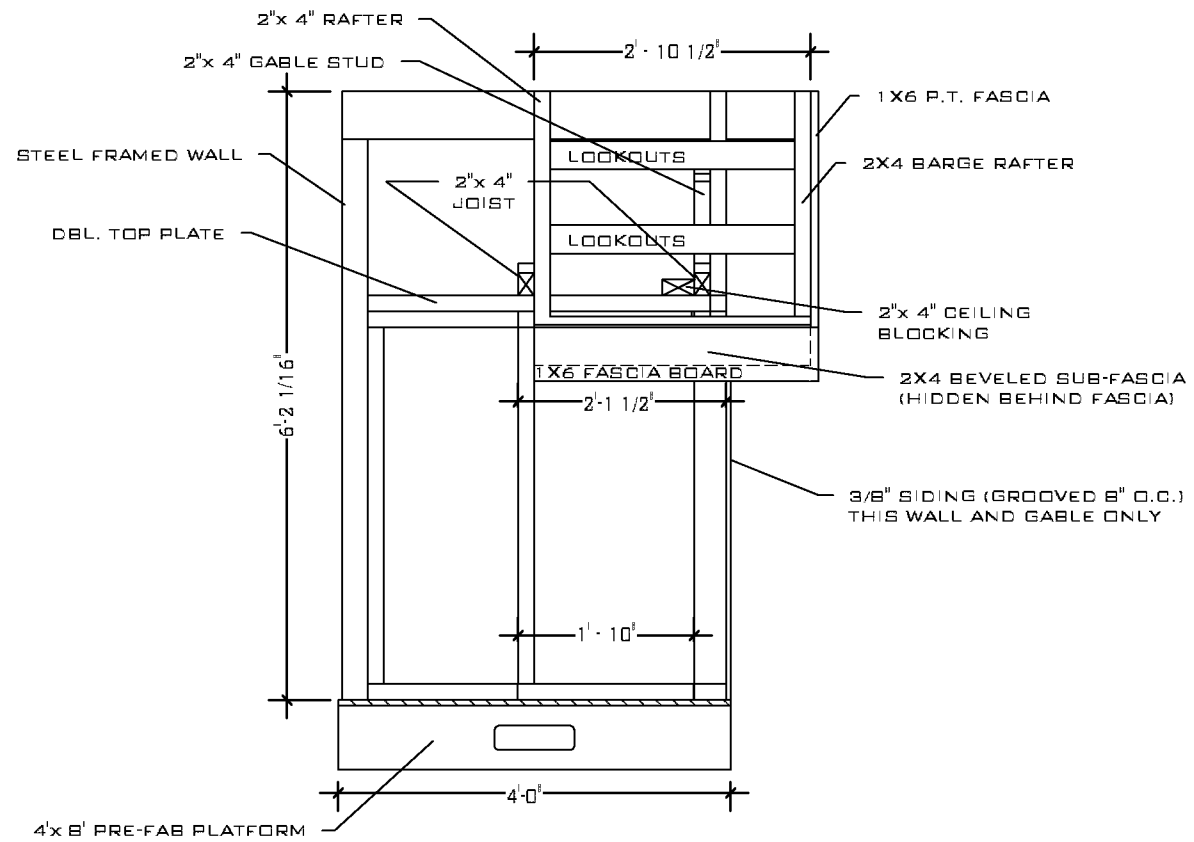
**ROOF FRAMING DETAILS**

**SCALE: 1/2" = 1'-0"**



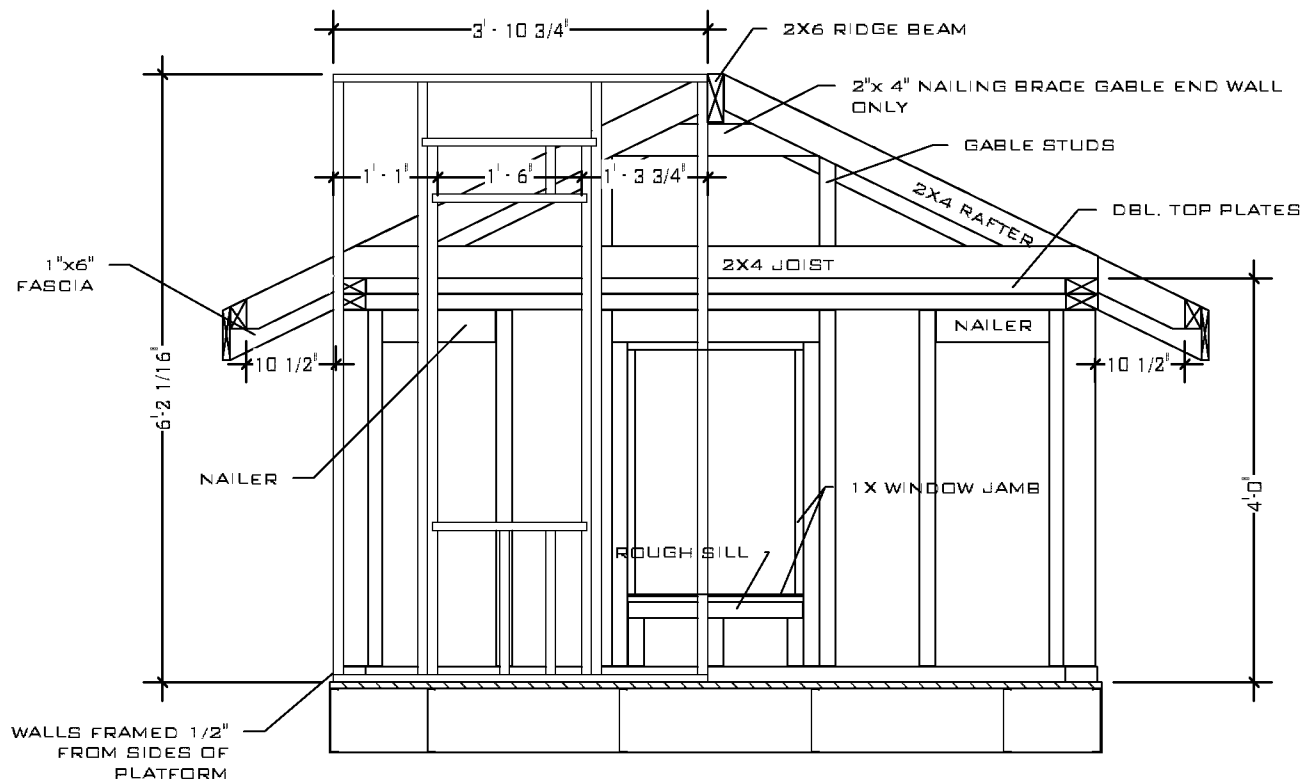
**FLOOR PLAN**

**SCALE: 1/2" = 1'-0"**



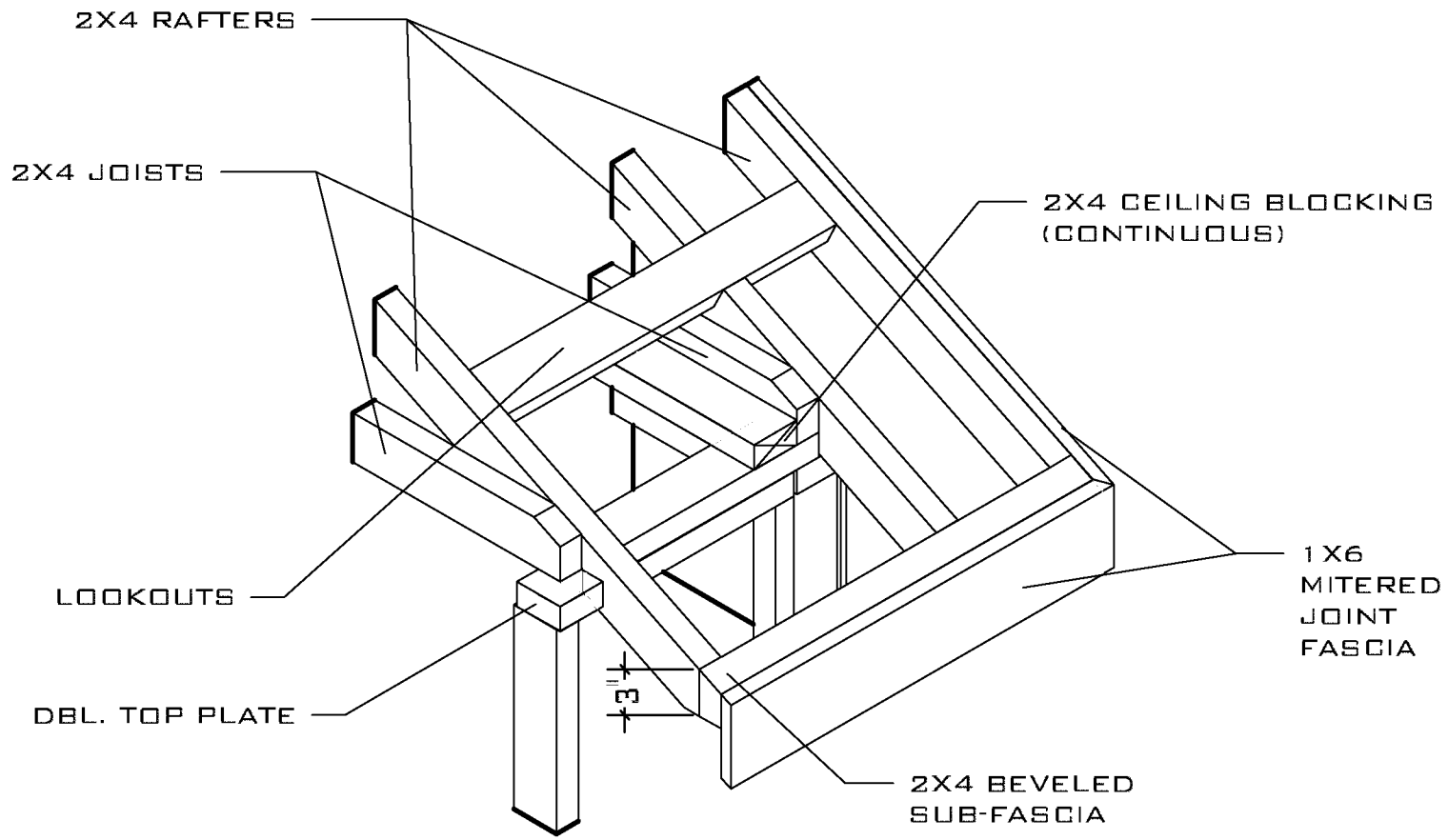
**LEFT FRAMING**

**SCALE: 1/2" = 1'-0"**



REAR ELEVATION WITH STEEL WALL

SCALE:  $\frac{1}{2}" = 1' - 0"$



**SUB-FASCIA / FASCIA DETAIL**

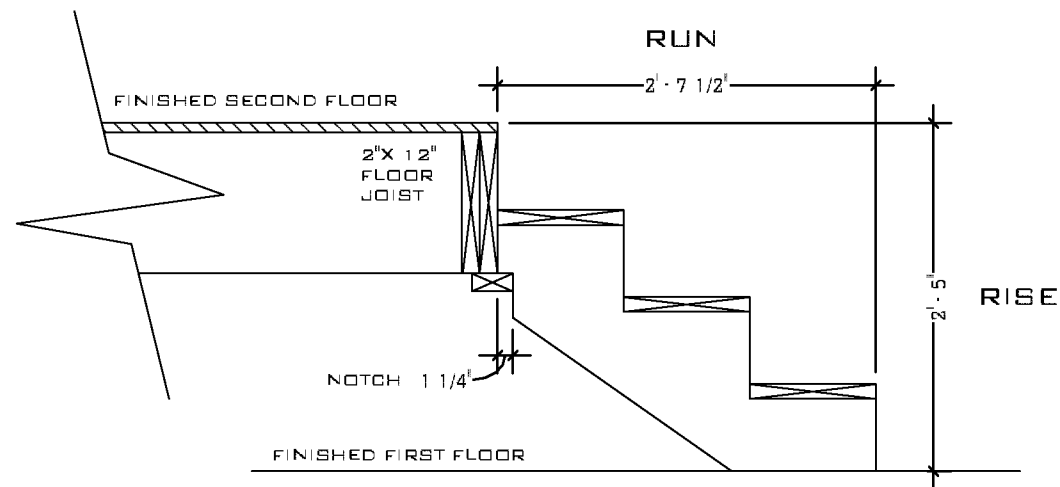
PROVIDE 2" x 12" x 4'-0"

TOTAL RISE = 29" (TREAD THICKNESS 5/4")

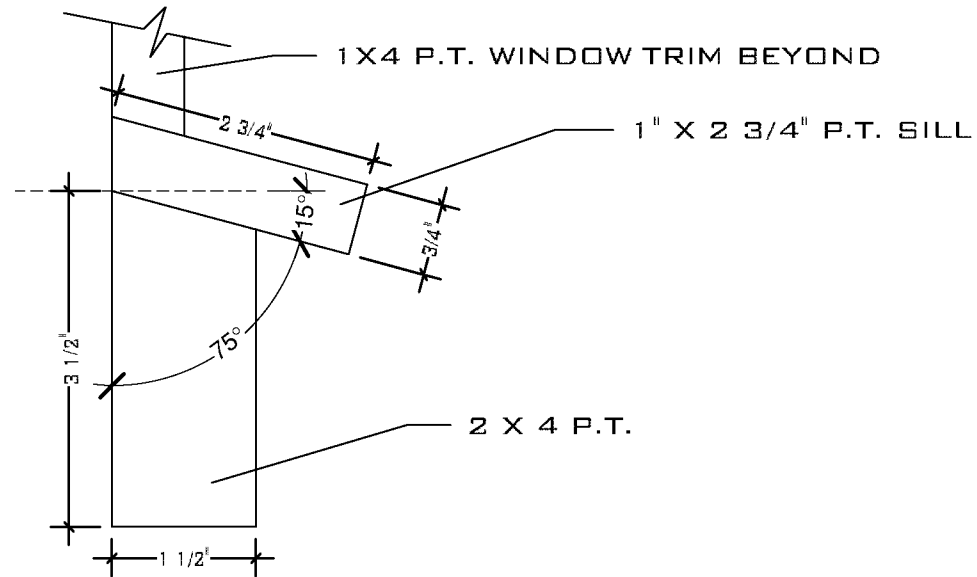
TOTAL RUN = 31 1/2" (OPEN RISER)

FINISH FLOORING = 3/4"

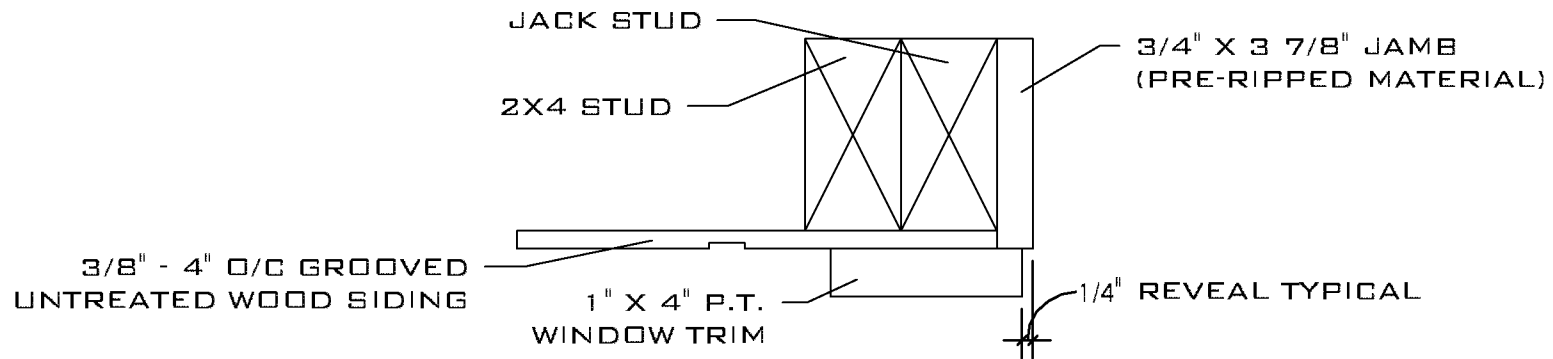
2"x 12" FLOOR JOIST (ACTUAL WIDTH = 11 3/4")



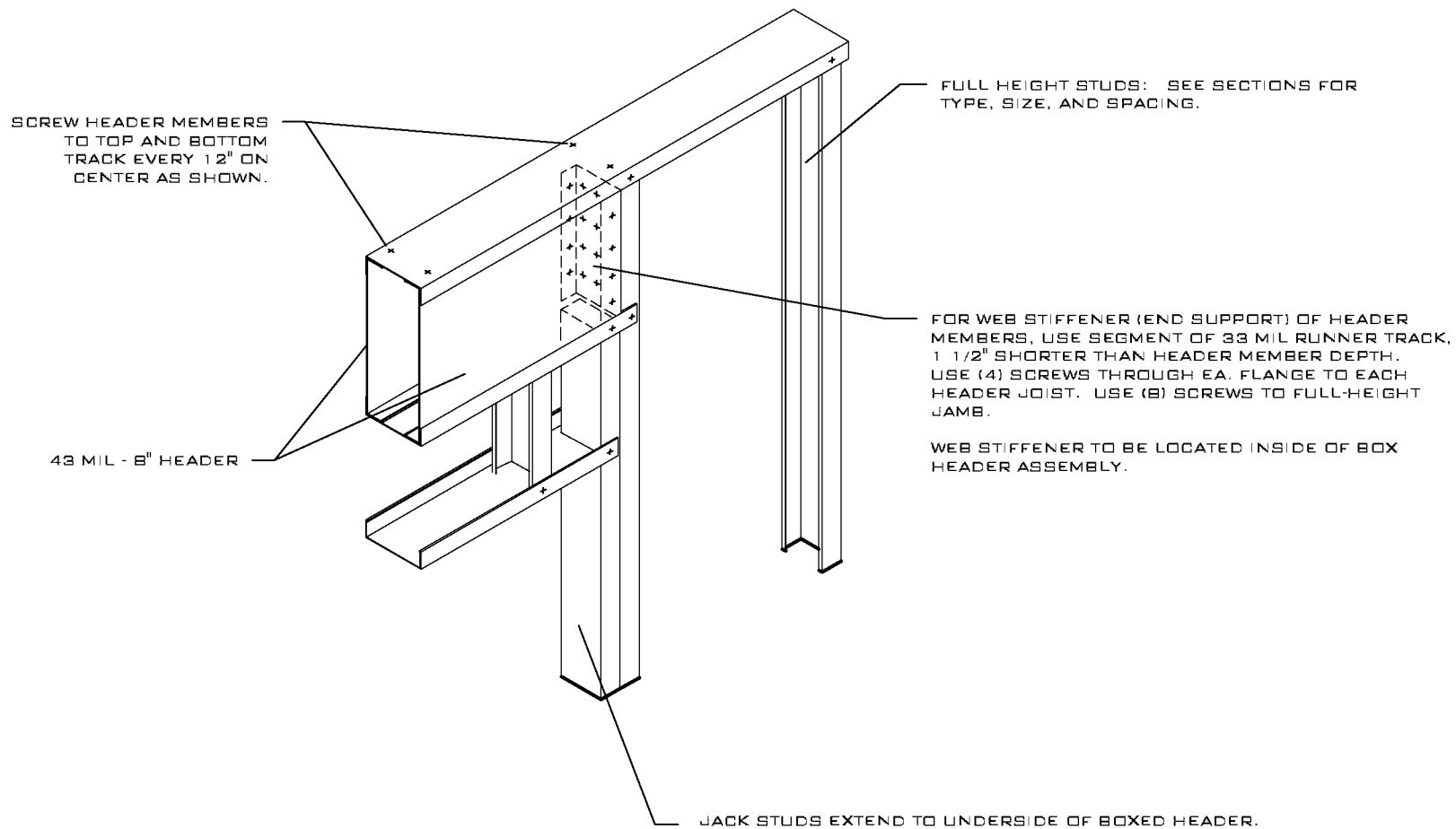
## STAIR STRINGER DETAILS



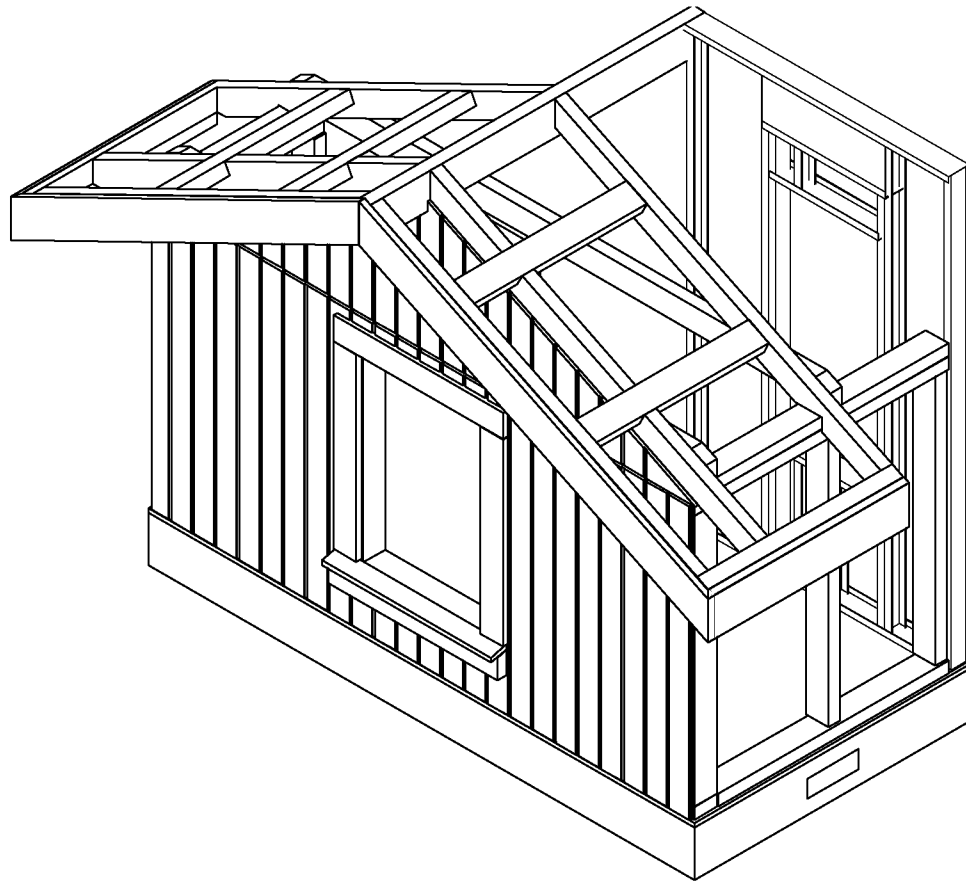
**SLOPED EXTERIOR WINDOW SILL AND TRIM DETAIL**



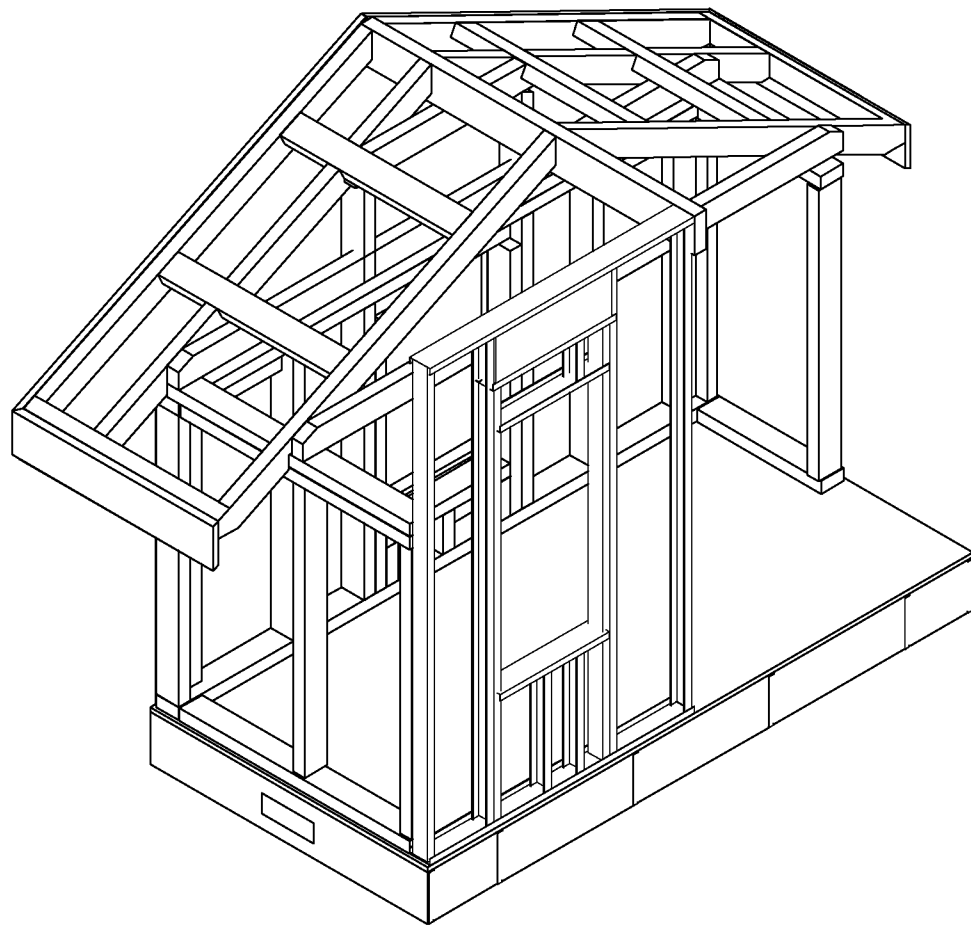
**WINDOW JAMB / TRIM REVEAL DETAIL**



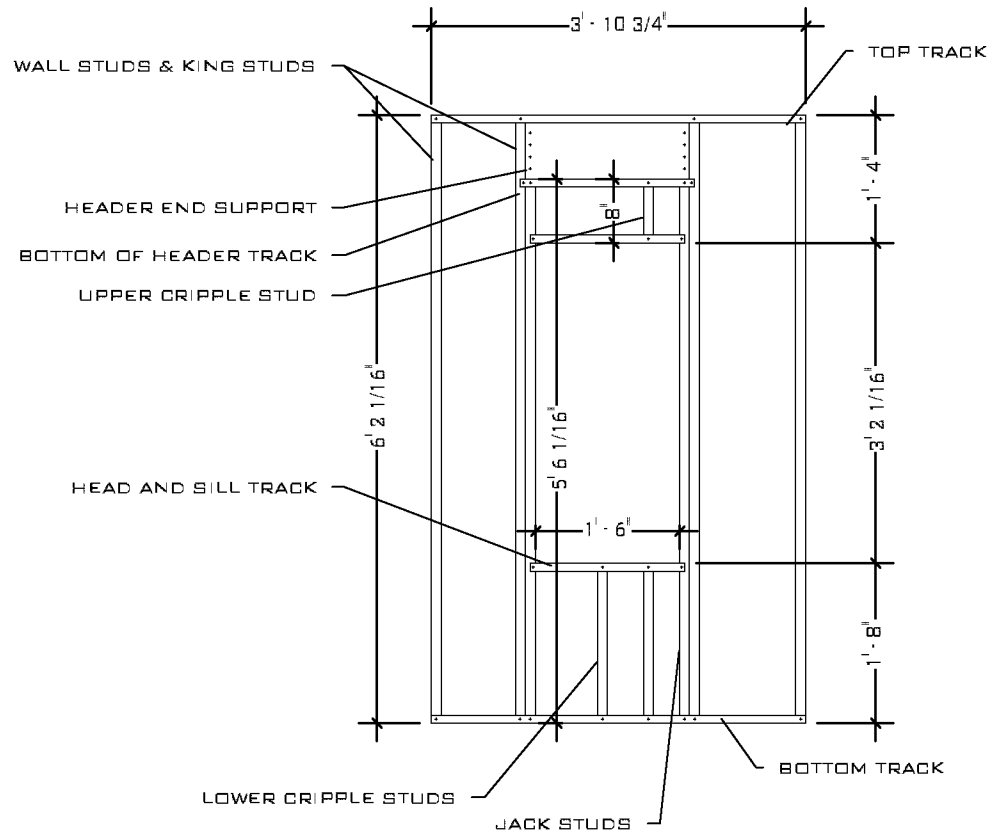
**TYPICAL STEEL FRAMING HEADER AND JAMB**



**3D VIEW - FRONT RIGHT**

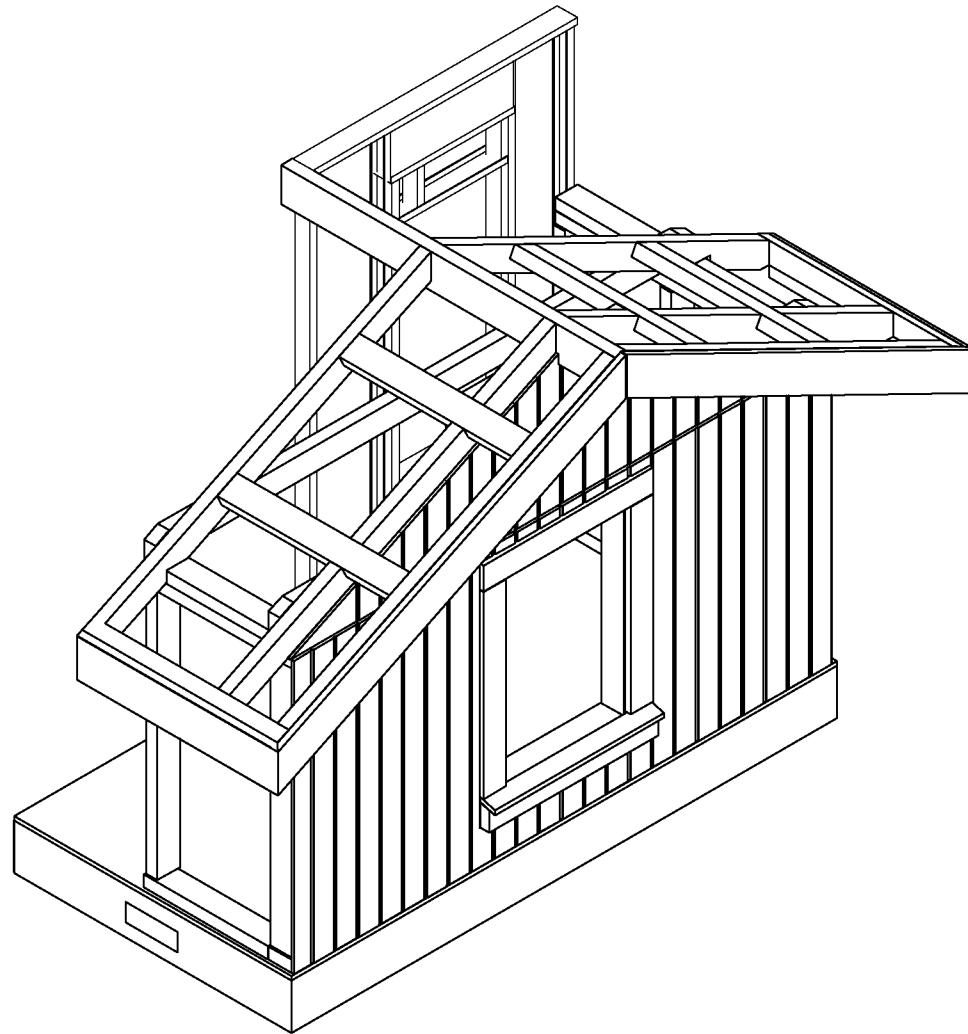


**3D VIEW - BACK RIGHT**

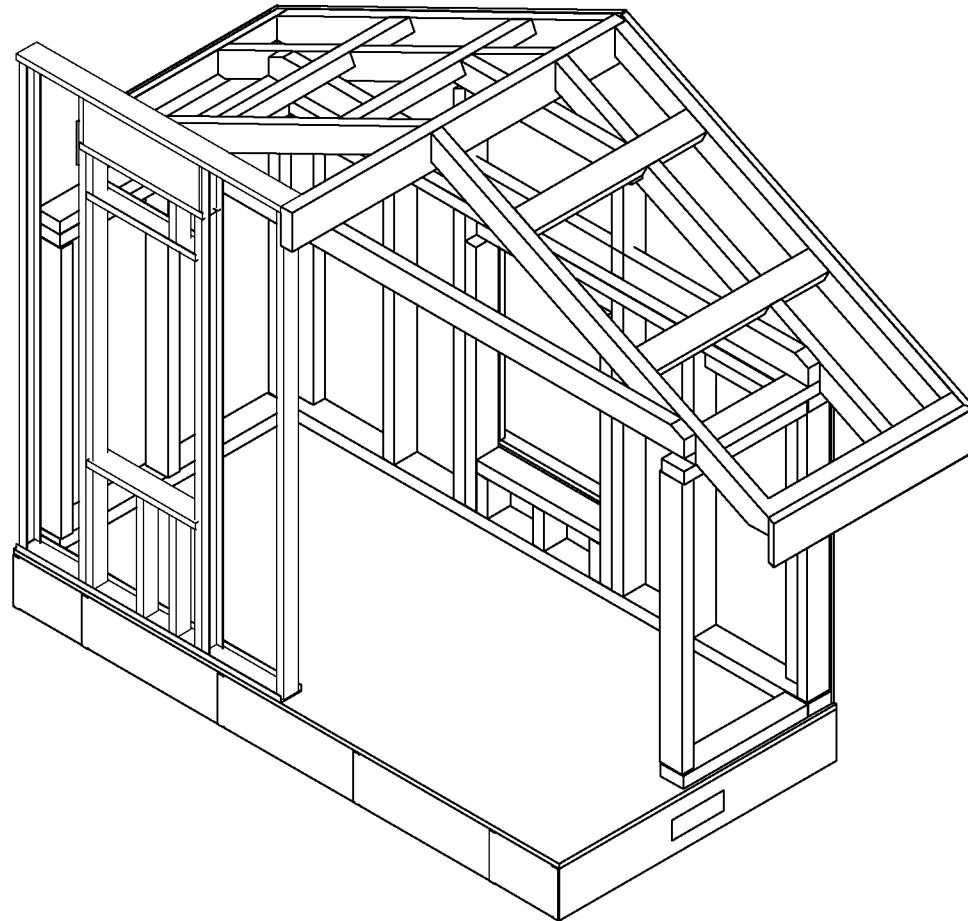


## STEEL WALL FRAMING DETAILS

SCALE: 1/2" = 1'-0"



**3D VIEW - FRONT LEFT**



**3D VIEW - BACK LEFT**